
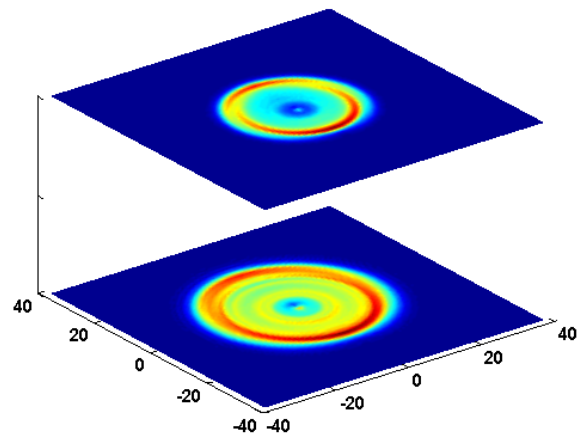
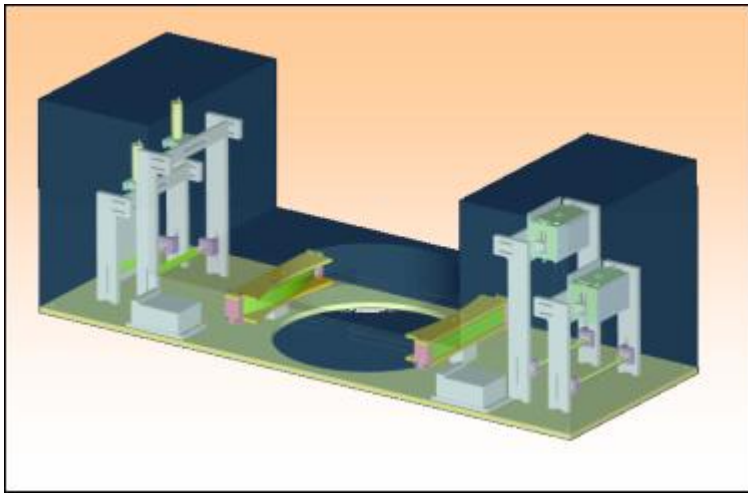


SETscan



AP-700 Patternator

The SETscan® AP-700* Angle Patternator by En'Urga Inc. delivers a **blazing fast** method to determine **cone angle** of sprays using our innovative **2-layer extinction tomography optical patternator**.



Features >>>>>

- Cone angle determined in a few seconds
- Optical, non-contact measurement
- Compatible with new SAE J2715 standards
- GUI with point-and-click operation
- Surface area contours at two axial locations
- SQL database enabled operation for automatic 100% nozzle quality assurance
- Insensitivity to alignment of nozzle center

Specifications >>>>>

- Max. spray diameter: 7 inches
- Radial resolution: 0.3 mm
- 2 laser sheets spaced 10 mm apart
- Array scan rate: 1000/4000 Hz
- Weight: 30 lbs
- Dimension: User specified x 15" x 5"
- Power: 120/230VAC, 50/60 Hz, 5 W

* Patent application on file at USPTO. SETscan is a registered trademark of En'Urga



innovations in quality control

1291-A Cumberland Avenue, West Lafayette, IN 47906 | Tel: 765-497-3269 | Fax: 765-463-7004 | <http://www.enurga.com>