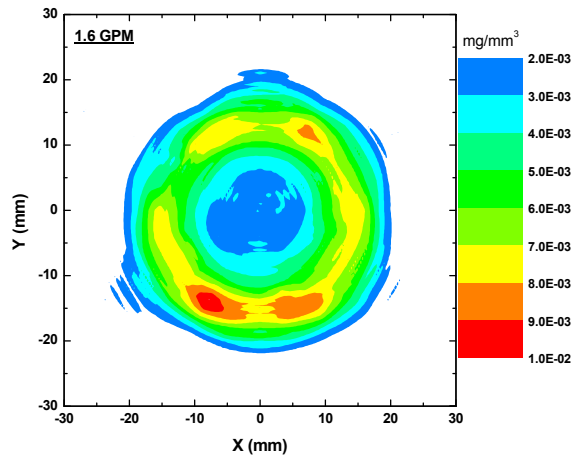
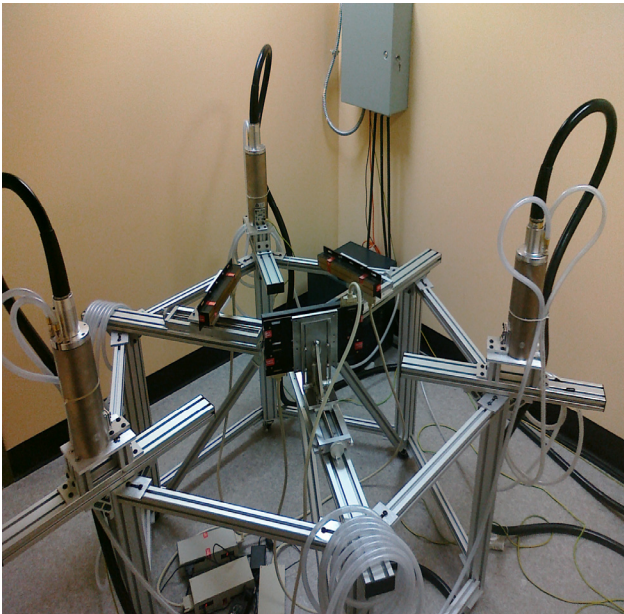


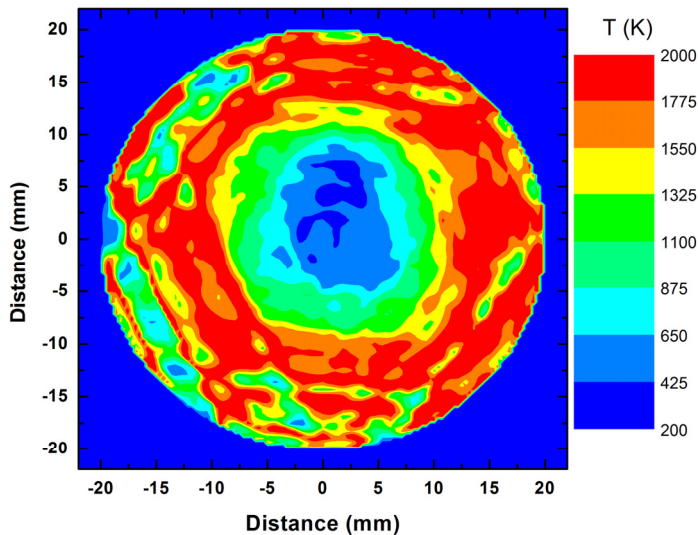
En'Urga Inc. introduces SETXvue, an innovative soft X-Ray tomography system that estimates planar mass concentration of liquids and solids in sprays.



Mass concentrations in a optically dense spray obtained using a 3-axis system

Features >>>>>

- **Three axis and six axis systems for high spatial resolution**
- **Temporal resolution as high as 10 KHz**
- **Only system capable of obtaining structure information in high pressure GDI and diesel sprays**
- **Suitable for optically dense and solid particle sprays**
- **Local mass concentrations estimated using X-Ray tomography**
- **Transient mass concentration profiles for multi-plume and irregularly shaped sprays**
- **Concentration data can be combined with SETscan optical patternator data (not possible in optically dense sprays) to provide full planar Sauter Mean Diameter**
- **Maps density variations in high speed turbulent flames**
- **X-Ray tomographic system for multiple applications in the automotive, power, aerospace, consumer, pharmaceutical and food industry**

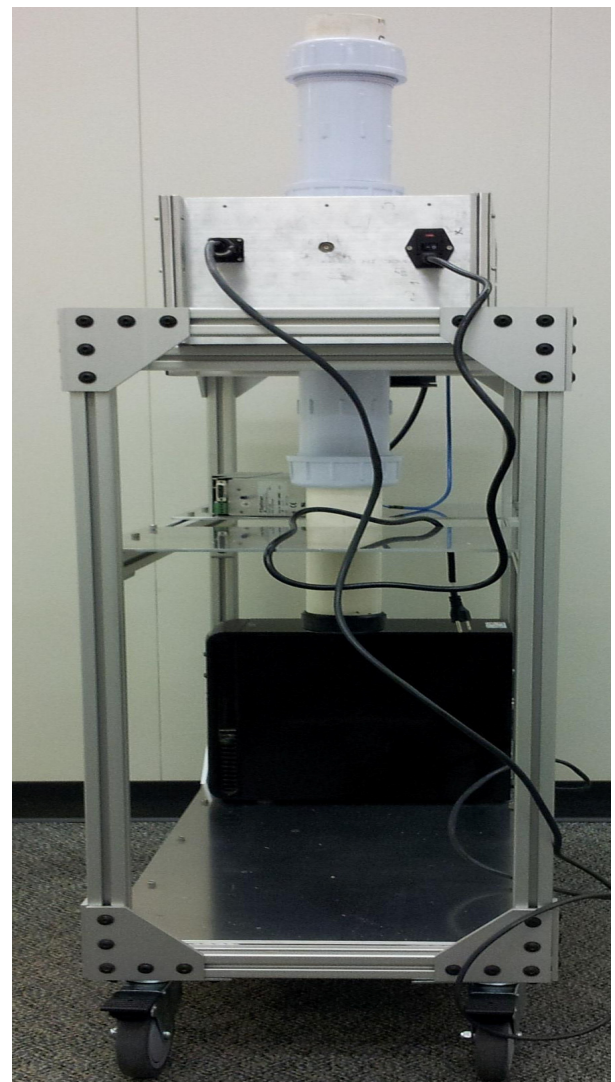


Density contours of a confined flame obtained in a windowless combustor

Single axis features >>>>

- Path Integrated mass concentrations estimated using X-Rays
- Calibration for specific types of particulate and liquid mixtures
- Fully lead enclosed for safe factory floor installation
- Radiological safety certification from a licensed physicist within the State of Indiana
- Fully customized for various size spray domains
- Easy to use point and click graphical user interface
- Full tomography with nozzle rotation

* Patent application on file at USPTO.



En'Urga Inc. provides a full range of contract testing services including optical patterning, diffraction drop sizing, PDA, and pattern imaging velocimetry. GDI testing inside a chamber at sub-atmospheric pressures and various fuel temperatures is one of our specialties.

Contact info@enurga.com