



Optical Characterization of GDI Injectors

An Overview



 765-497-3269

 765-463-7004

<http://www.enurga.com>



1291 Cumberland Avenue, West Lafayette, IN 47906

innovations in quality control



Motivation

- **Optimization of fuel sprays provide one of the best methods for increased efficiency**
- **Wide variation in injector performance, even from the same manufacturer**
- **Current quality audit methods do not pick up even significant differences**
- **Key question: What can be done to provide for a better quality audit of injectors**



1291 Cumberland Avenue, West Lafayette, IN 47906

innovations in quality control



Ranking of Attributes

- **Method should be repeatable**
- **Sensitive to small differences**
- **Accurately estimate key spray characteristic**
- **Equipment should be easy to operate**



1291 Cumberland Avenue, West Lafayette, IN 47906

innovations in quality control



Methods used in Study

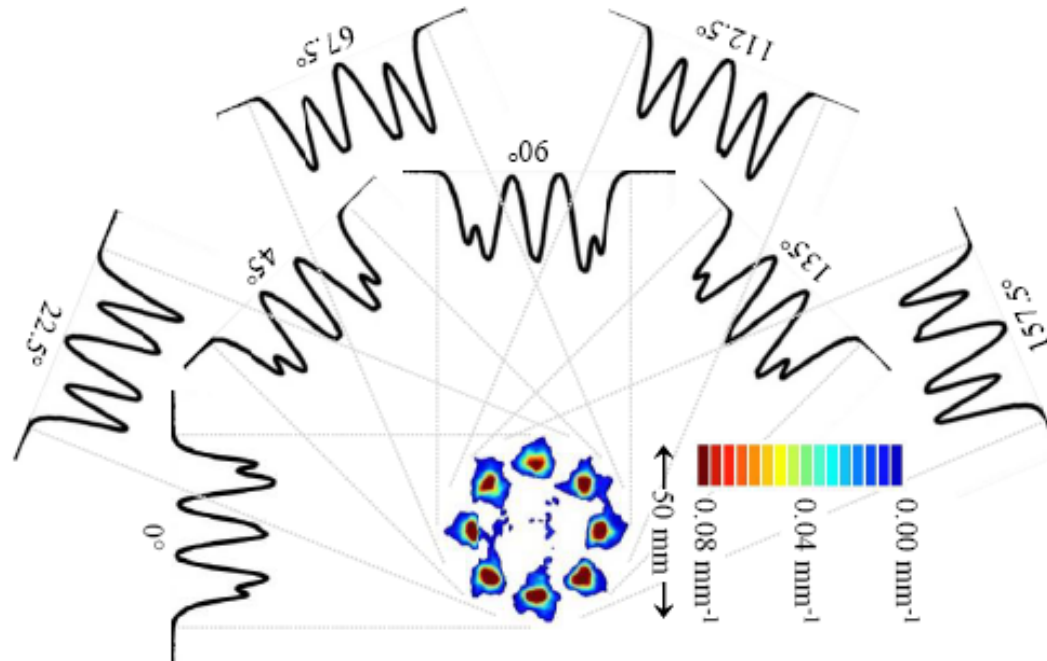
- **Drop sizing using Diffraction**
- **Plume penetration using SCIVel velocimeter**
- **Spray pattern using SETscan patternator**



1291 Cumberland Avenue, West Lafayette, IN 47906

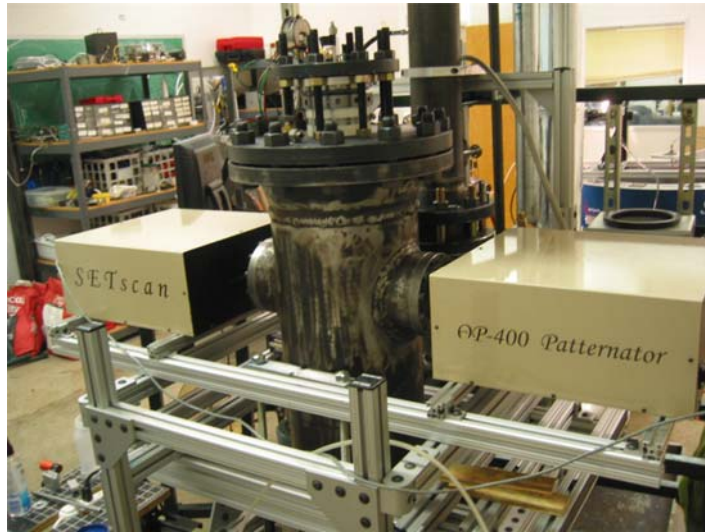
innovations in quality control

Principle of Operation of Patternator



- **Tomography of extinction data with a sampling frequency of 9.4 KHz**

Test Details



*Pressure vessel fitted with
AP400 patternator
Maximum field of view is
100 mm*

- **Injection pressures: up to 20 MPa**
- **Ambient pressures: 40 Kpa to 1.5 Mpa absolute**
- **Fuel temperature: up to 90 °C**
- **Fuels: Gasoline or Heptane**



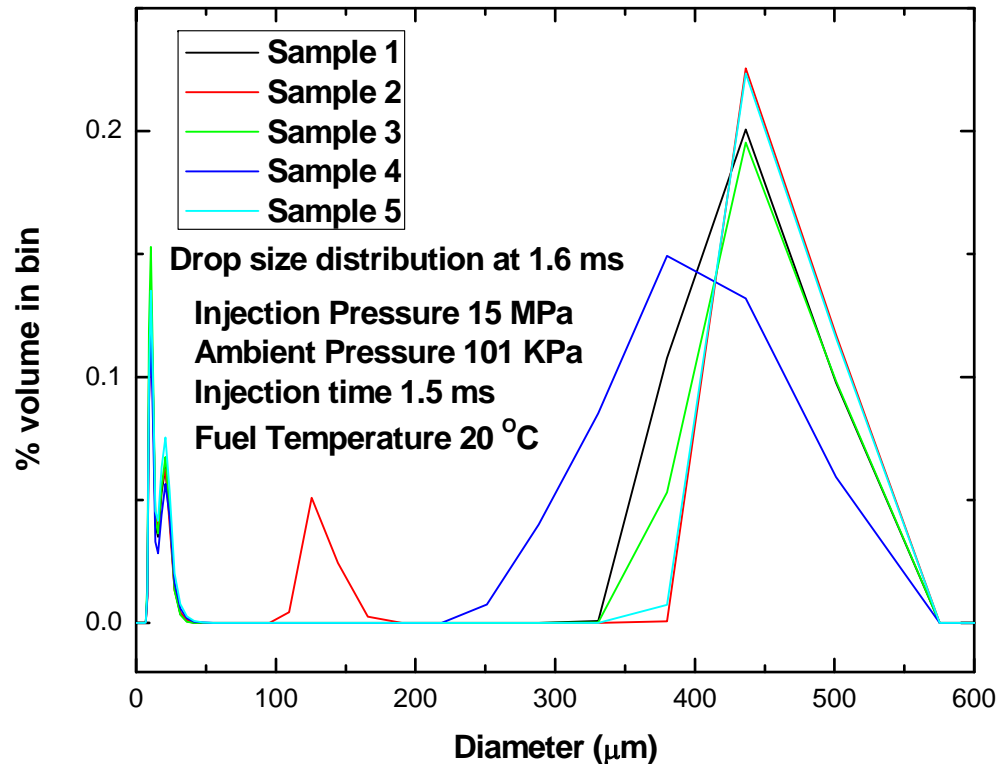
Sample Results



1291 Cumberland Avenue, West Lafayette, IN 47906

innovations in quality control

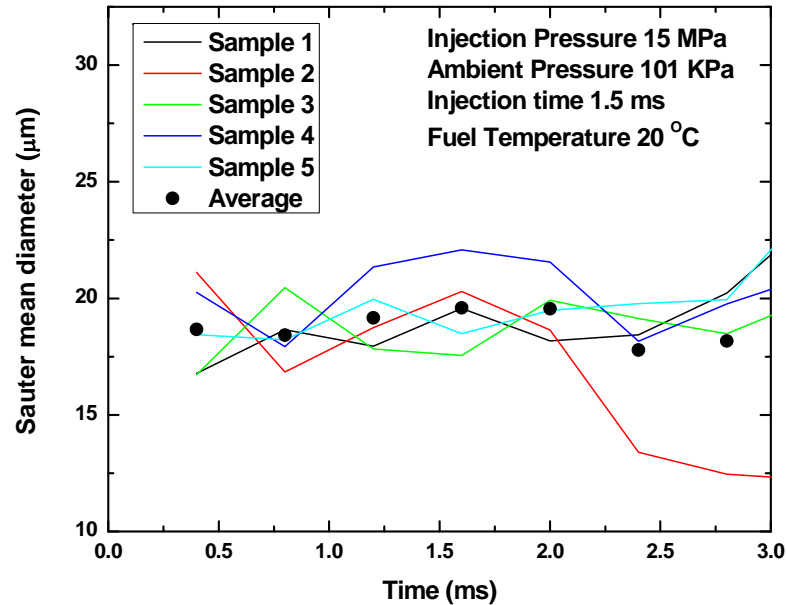
Drop Size Distribution



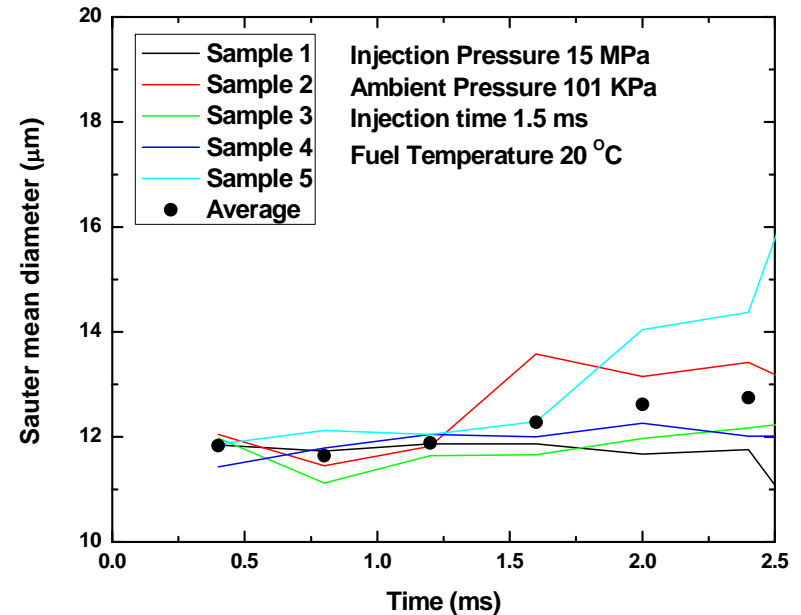
- Obscuration is very high
- Large peak at high values probably caused by beam wandering
- Usually bimodal distribution

Mean drop diameter (D_{32})

All drops from 0 to 500 microns



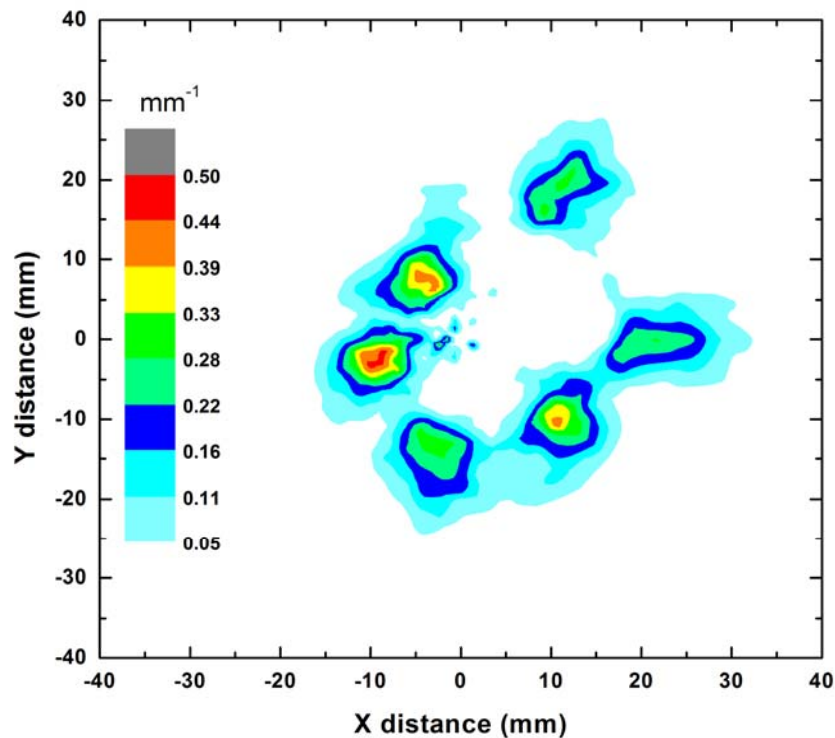
All drops from 0 to 200 microns



- Standard deviation in first case is ~ 10%
- Slightly better during initial phase for second case

Difficult to rank injectors and probably not a good quality audit tool

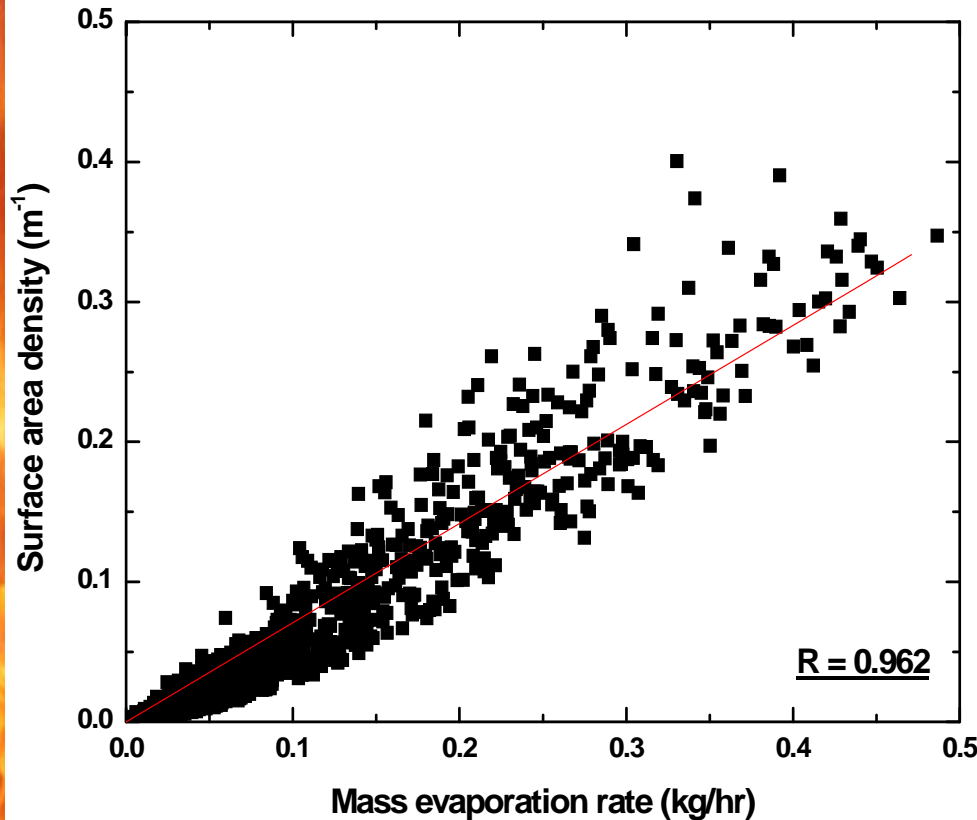
Patternator Results



- **15 bar injection pressure**
- **Data collection with injection pulse**
- **Contour maps of surface area density**
- **Data collected for ~ 2 to 3 ms after injection pulse**
- **Analysis based on 5 samples**

Importance of surface areas

Correlation of fuel evaporation with parameters



Drop size = 0.681

Velocity = - 0.239

Mass flux = 0.903

Surface area density = 0.962

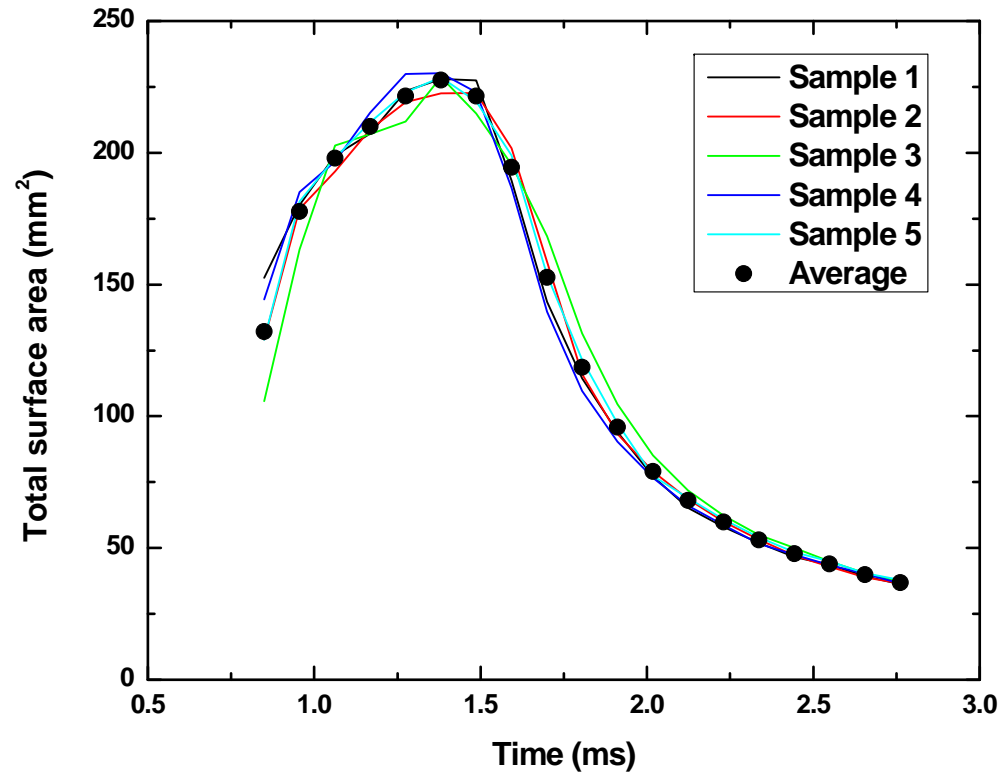
Surface area density is the most important parameter to measure if you are interested in obtaining the amount of fuel evaporated at any location in a spray



1291 Cumberland Avenue, West Lafayette, IN 47906

innovations in quality control

Sample Repeatability



- Total surface area is the total surface area of all the drops within a 1 mm height in the patternation plane
- Standard deviation in all cases (other than the first sample) is <5%
- If total surface area over entire injection period is taken, standard deviation is less than 0.5%

Ideal variable for ranking and quality audit of different nozzles

Plume Analysis

Mean Plume angles (deg)	Standard Error	% area in plume	Standard Error
10.89	0.13	19.32	0.66
5.73	0.11	4.69	0.14
11.53	0.13	21.71	0.92
10.48	0.37	17.91	0.71
11.51	0.32	23.06	0.24
9.35	0.36	12.93	0.95
Mean centroid (x,mm)	Standard Error	Mean centroid (y, mm)	Standard Error
3.26	0.12	-5.69	0.19
-4.84	0.14	14.3	0.13
22.13	0.25	1.97	0.06
29.04	0.12	10.75	0.09
15.36	0.13	-18.49	0.03
0.10	0.12	-20.01	0.17

Centroids within
200 microns

Plume angles
within 1/2 degree

% distribution in
plumes within 1%

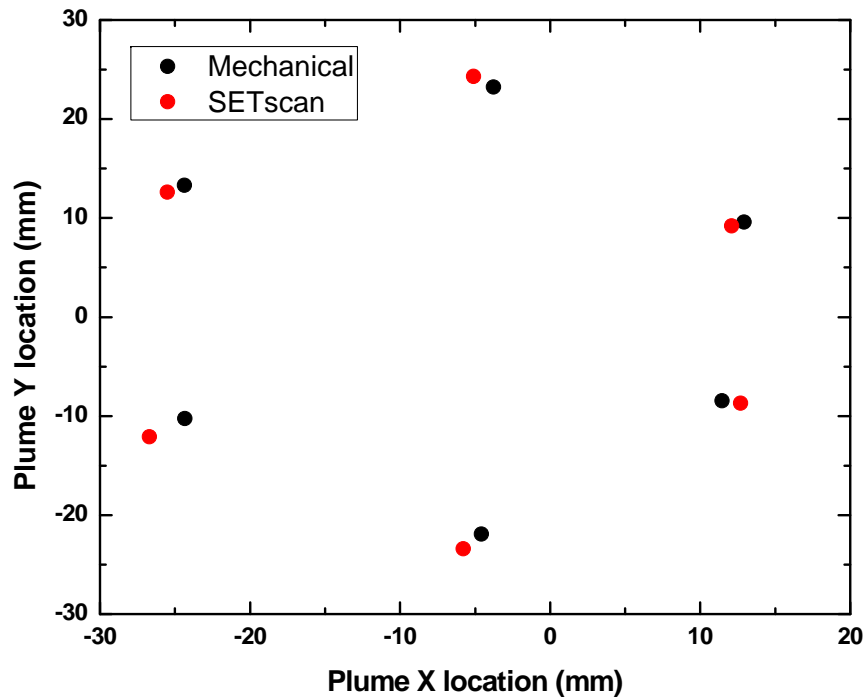
Improves with
more samples



1291 Cumberland Avenue, West Lafayette, IN 47906

innovations in quality control

Comparison with Mechanical Patternator



- Mechanical patternator has stagnation planes
- Requires extensive time and effort
- Spatial resolution not very high for mechanical patternator
- Results show that mass flux centers correlate well with surface area centers

Fully automated plume analysis for quality audit



1291 Cumberland Avenue, West Lafayette, IN 47906

innovations in quality control

Penetration Distance



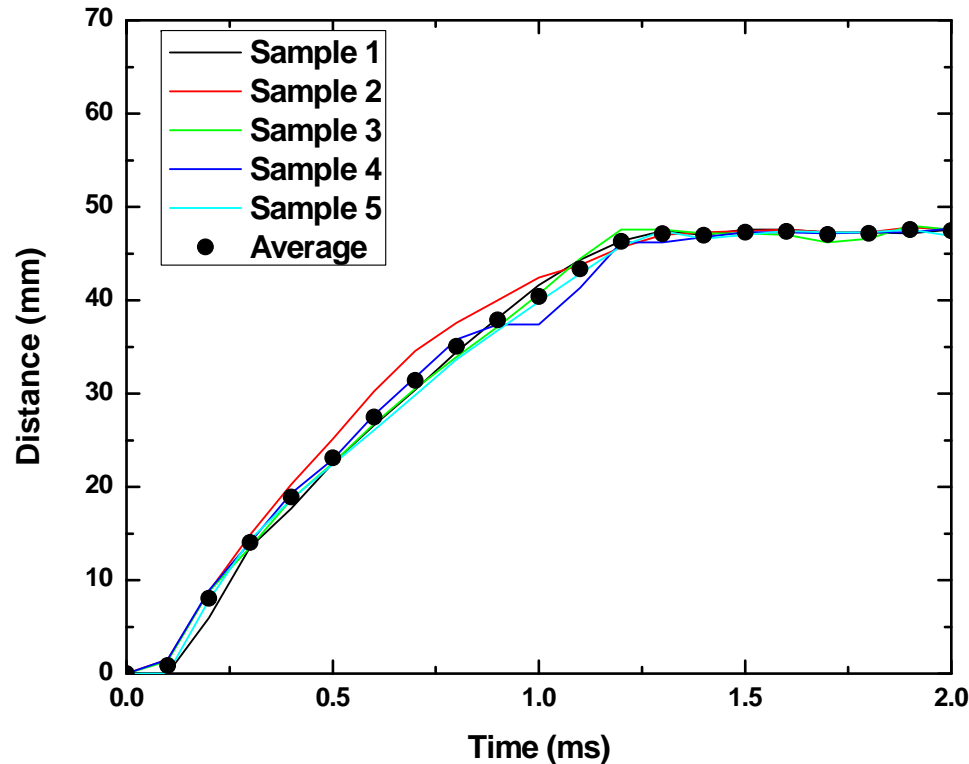
- **Injection pressure 10 MPa gage, Chamber pressure 40 Kpa absolute**
- **Fuel temperature 90 °C**
- **Plumes overlap**



1291 Cumberland Avenue, West Lafayette, IN 47906

innovations in quality control

Repeatability of measurement



- Extinction based measurement, similar to the patternator
- Standard deviation in all cases (other than the first sample) is $\sim 5\%$
- Higher than the patternator since whole field image has some errors due to secondary emission

Can be used for quality audit, but not ideal for ranking of nozzles

Conclusions

- There is some variation in the shot to shot characteristics of sprays from GDI injectors
- When testing spray under actual operating conditions within a pressure chamber, it is difficult to have a large sample size
- Diffraction based measurements may not be ideal for ranking nozzles under such conditions
- Extinction based measurements show higher consistency than diffraction or scattering based measurements under real operating conditions
- Planar extinction tomography has been shown to be the best method for ranking nozzles or for quality audit purposes.



1291 Cumberland Avenue, West Lafayette, IN 47906

innovations in quality control